

**Bonanova**  
Объект № 077645



  
**PORTA MALLORQUINA®**  
Your home. Our passion.

## Elegant triplex-apartment with panoramic views, roof-terrace and private jacuzzi in La Bonanova

жилая площадь:	245 m <sup>2</sup>	бассейн:	✓
спальни:	3	Энергетическая	в процессе
санузел:		сертификация:	
балкон или	✓		
терраса:	✓	<b>цена:</b>	<b>€ 1.950.000,-</b>
вид на море:			



# Вонанова

## Объект № 077645



### Описание объекта:

This modern, very high-quality penthouse is situated in the desirable district of La Bonanova, only a few minutes from the town centre. Built in 2018 the residential building contains only 6 living units and so offers a very high level of privacy.

Providing the highest level of comfort and modern design, the apartment stretches over 3 levels. On the first floor is the open living/dining area with beautiful views of the sea and over the bay of Palma, 2 guest bedrooms, one with en-suite bathroom, and a guest WC. A high-quality open kitchen equipped with Miele appliances is integrated into the apartment, and there is a separate utility room. An approx. 9 sqm terrace with awning invites to spend relaxing time in the sun.

Housed on the 2nd level is the main bedroom with bathroom en suite. This spacious, light-flooded room impresses with breathtaking sea views over the bay of Palma, and also has a terrace.

A highlight of this exceptional penthouse is the rooftop terrace on the 3rd level, with over 70 sqm and its own jacuzzi and offering views over the rooftops of La Bonanova.

Further features include 2 garage parking spaces, a storage room, wheelchair accessibility, hot/cold air conditioning, underfloor heating, double glazing, natural-stone floors, and 148 sqm of pure living space.

**Вонанова**

Объект № 077645



## Месторасположения и окрестности:

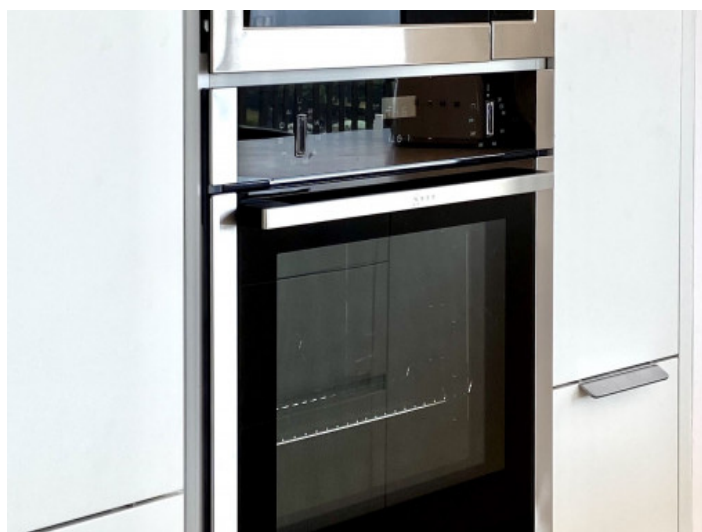
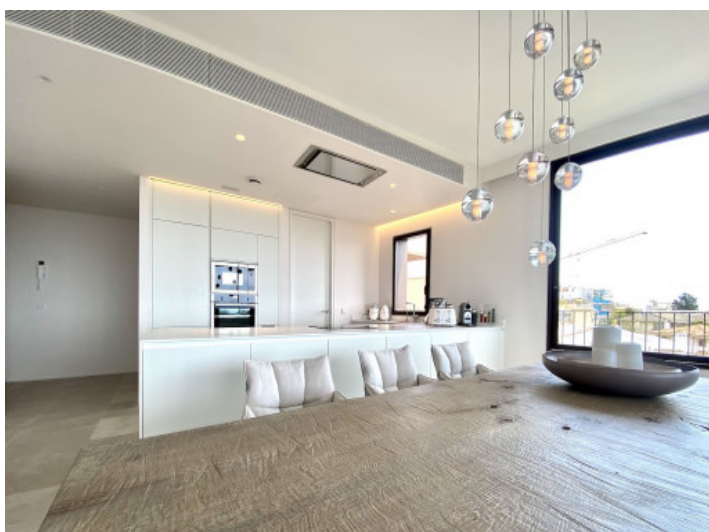
Due to its elevated location, bordering with the wonderful Parc de Bellver with the famous Bellver castle, the beautiful area of Bonanova provides wonderful views over the whole of the bay of Palma, the open sea and the mountains.

This villa district, although centrally located and with superb connections to the centre of Palma by car or bus, is one of the quietest and most secure districts of Palma. It offers, therefore, the possibility to live in a peaceful area but still be able to easily enjoy all the facilities of the town with its restaurants, bars, cafes and shops.

In addition this neighbourhood itself offers gastronomy, supermarkets, sports locations and clinics, all close by. The shopping centre of Porto Pi, for example, is only a few minutes away by car and offers a huge choice of shops and restaurants. Lovely beaches such as that in Cala Major are also only a few minutes away by car. Bonanova, furthermore, is also ideal for children with the 'Queen's College' which enjoys an excellent reputation internationally.



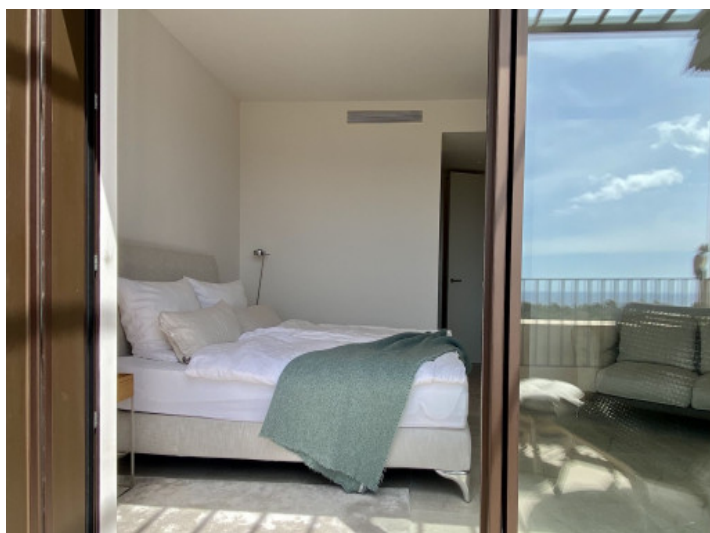
Вонапона  
Объект № 077645



All information is correct to the best of our knowledge. Errors and prior sale excepted. This prospectus is purely for information purposes. Only the notarized deed of sale is legally binding.



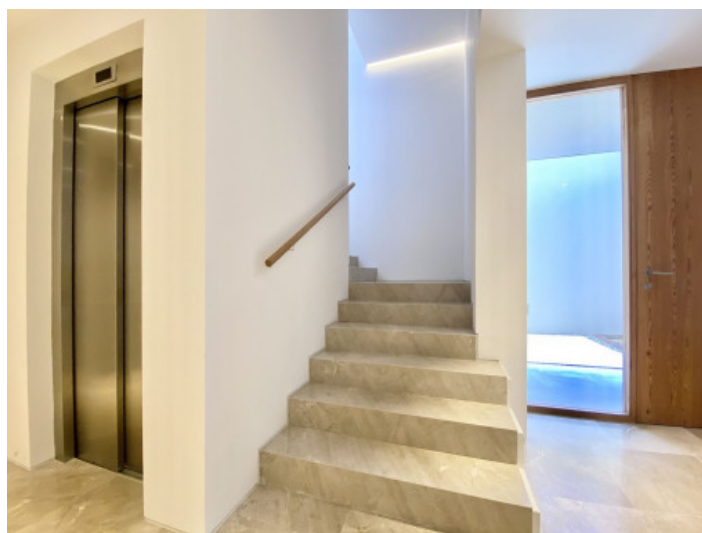
Вонанова  
Объект № 077645



All information is correct to the best of our knowledge. Errors and prior sale excepted. This prospectus is purely for information purposes. Only the notarized deed of sale is legally binding.



Вонанова  
Объект № 077645



All information is correct to the best of our knowledge. Errors and prior sale excepted. This prospectus is purely for information purposes. Only the notarized deed of sale is legally binding.