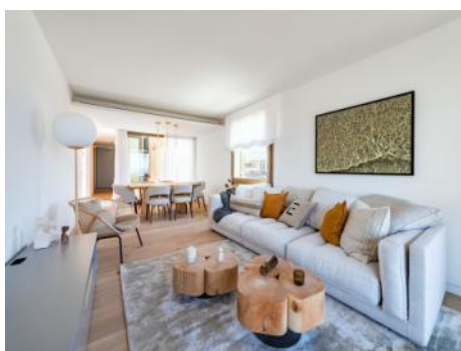


Bonanova
Объект № 116632



Exclusive, luxurious, high-quality, 2-bedroom duplex penthouse with sea views and pool in Bonanova

жилая площадь:	136 m ²	бассейн:	✓
спальни:	2	Энергетическая	g
санузел:	3	сертификация:	
балкон или	✓		
терраса:	✓	цена:	€ 1.825.000,-
вид на море:			



Вонапова

Объект № 116632



Описание объекта:

'Parallel East & West' presents itself with 2 innovative buildings, each with 6 luxury apartments which offer the option of either a private swimming pool, a garden or a roof terrace with panoramic views over the bay of Palma, Cala Major and Illetas.

Aesthetic architecture, contemporary but respectful sustainability, highest energy efficiency level, and harmony with the natural environment have been combined with outstanding niveau in this very special residential project.

The collection of buildings is located between "Panorama Palma Bay" and "Bellver Castle".

This duplex penthouse has a total area of 136 sqm distributed over 2 bedrooms with bathrooms en suite, a guest WC, a utility room, a dressing area, and a large kitchen and living area with terrace. The spacious roof terrace with panoramic sea views has an outside summer kitchen with seating area and a pool with an area for sunbathing.

Further features include a fully equipped, air-conditioned fitness area and 2 garage parking places with storage room.

The orientation is to the east and the west.

Вонанова

Объект № 116632



Месторасположения и окрестности:

Due to its elevated location, bordering with the wonderful Parc de Bellver with the famous Bellver castle, the beautiful area of Bonanova provides wonderful views over the whole of the bay of Palma, the open sea and the mountains.

This villa district, although centrally located and with superb connections to the centre of Palma by car or bus, is one of the quietest and most secure districts of Palma. It offers, therefore, the possibility to live in a peaceful area but still be able to easily enjoy all the facilities of the town with its restaurants, bars, cafes and shops.

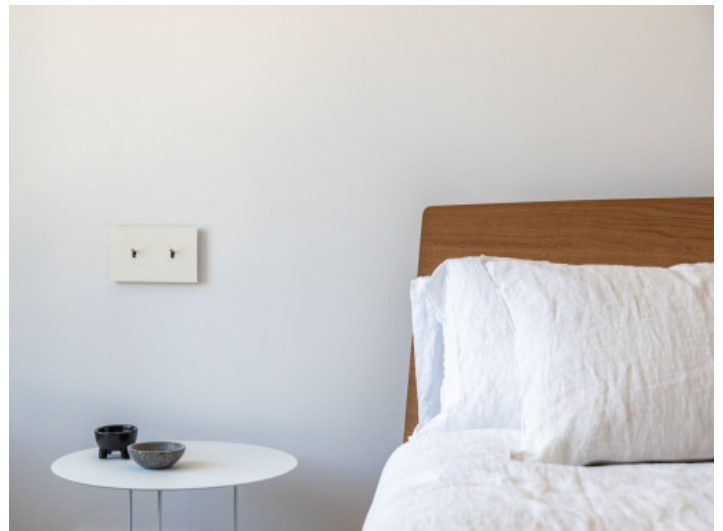
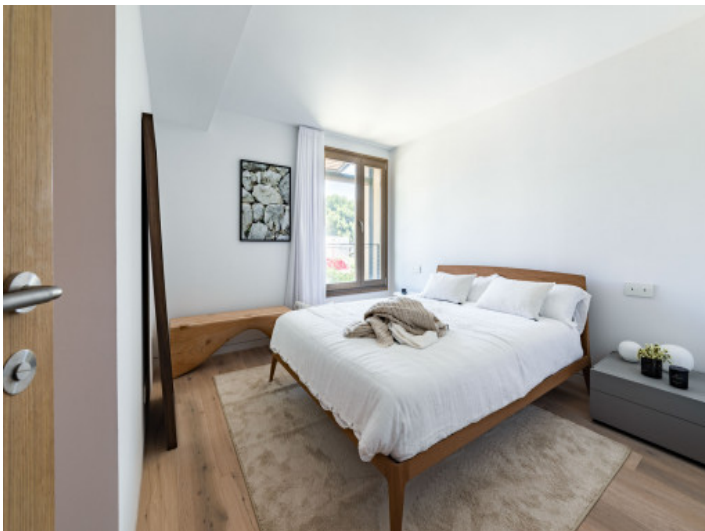
In addition this neighbourhood itself offers exquisite gastronomy, supermarkets, sports locations and clinics, all close by. The shopping centre of Porto Pi, for example, is only a few minutes away by car and offers a huge choice of shops and restaurants. Lovely beaches such as that in Cala Major are also only a few minutes away by car. Bonanova, furthermore, is also ideal for children with the 'Queen's College' which enjoys an excellent reputation internationally.

Воранова
Объект № 116632



All information is correct to the best of our knowledge. Errors and prior sale excepted. This prospectus is purely for information purposes. Only the notarized deed of sale is legally binding.

Вонанова
Объект № 116632



All information is correct to the best of our knowledge. Errors and prior sale excepted. This prospectus is purely for information purposes. Only the notarized deed of sale is legally binding.

Вонанова
Объект № 116632



APARCAMIENTOS Y TRASTEROS
PLANTA SÓLOMO
SERVICIO SERVICIOS, COCINA
INSTRUMENTACIÓN Y ELECTRICIDAD



All information is correct to the best of our knowledge. Errors and prior sale excepted. This prospectus is purely for information purposes. Only the notarized deed of sale is legally binding.