

Bonanova
Объект № 116632A




PORTA MALLORQUINA®
Your home. Our passion.

Palma Sea View - Exclusive Mediterranean Luxury Residential Project with Highest Standards- 2 SZ Duplex Penthouse with Pool - purchase

жилая площадь:	106 m ²	бассейн:	✓
спальни:	2	Энергетическая	в процессе
санузел:	2	сертификация:	
балкон или	✓		
терраса:	✓	цена:	€ 1.225.000,-
вид на море:			



Вонанова

Объект № 116632A



Описание объекта:

Parallel East & West' presents itself with 2 innovative buildings, each with 6 luxury flats, which optionally have a private swimming pool, their own garden or a protected roof terrace with panoramic views over the bay of Palma, Cala Major and Illetas.

Architectural aesthetics, contemporary, respectful sustainability, highest energy efficiency as well as a harmonious embedding in the natural environment have been combined at an outstanding level in this special residential project.

The building ensemble is located between the polarities of "Panorama Palma Bay" and "Bellver Castle".

This duplex, 2-level penthouse has a total area of 106 sqm distributed over 2 bedrooms with bathrooms en suite, a guest WC, an utility room, a dressing area, and a large kitchen and living area with terrace. The beautiful roof terrace with panoramic and sea views has a seating area and a pool with an area for sunbathing.

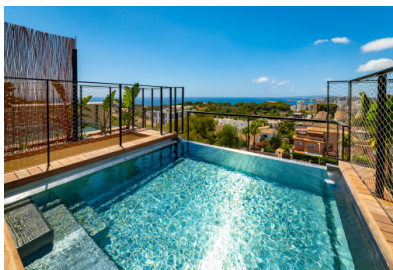
There is also a fully equipped, air-conditioned fitness area.

One garage spaces with storage room is included in the purchase price.

Orientation: E/W

Bonanova

Объект № 116632A



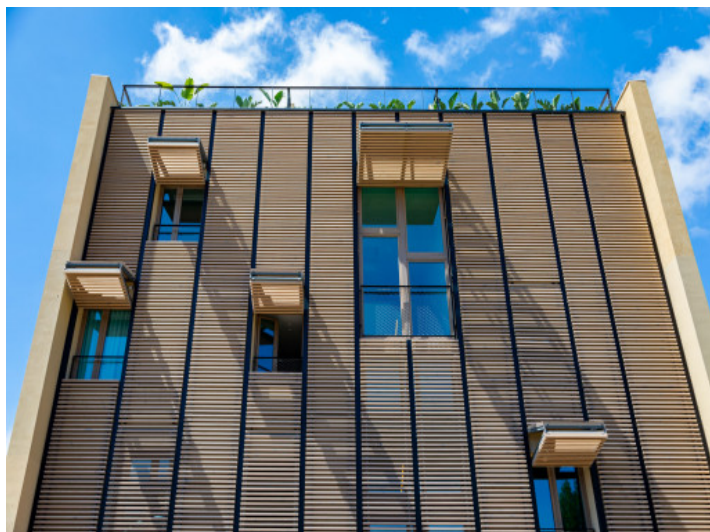
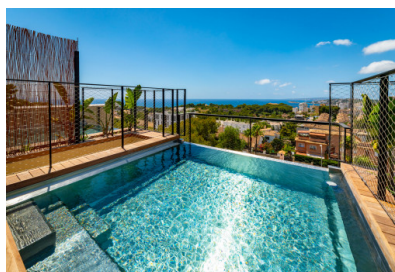
Месторасположения и окрестности:

Due to its elevated location, bordering with the wonderful Parc de Bellver with the famous Bellver castle, the beautiful area of Bonanova provides wonderful views over the whole of the bay of Palma, the open sea and the mountains.

This villa district, although centrally located and with superb connections to the centre of Palma by car or bus, is one of the quietest and most secure districts of Palma. It offers, therefore, the possibility to live in a peaceful area but still be able to easily enjoy all the facilities of the town with its restaurants, bars, cafes and shops.

In addition this neighbourhood itself offers exquisite gastronomy, supermarkets, sports locations and clinics, all close by. The shopping centre of Porto Pi, for example, is only a few minutes away by car and offers a huge choice of shops and restaurants. Lovely beaches such as that in Cala Major are also only a few minutes away by car. Bonanova, furthermore, is also ideal for children with the 'Queen's College' which enjoys an excellent reputation internationally.

Вопанова
Объект № 116632А

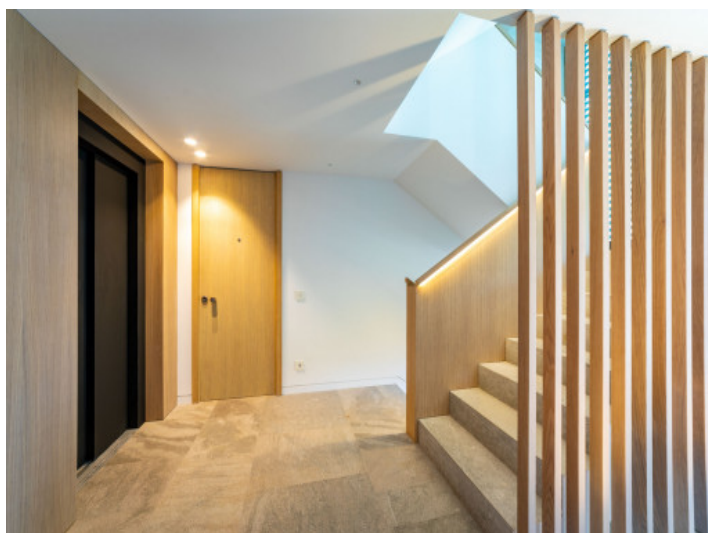
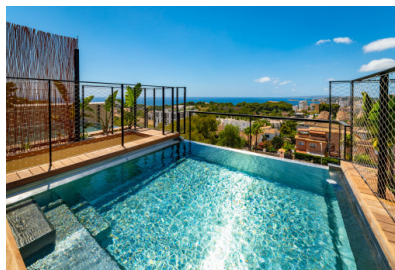


All information is correct to the best of our knowledge. Errors and prior sale excepted. This prospectus is purely for information purposes. Only the notarized deed of sale is legally binding.

PORTA MALLORQUINA • THERESIENST.: 81, D-80333 MÜNCHEN
TEL. +34 971 698 242 • INFO@PORTAMALLORQUINA.COM

Вопанова

Объект № 116632А



APARCAMIENTOS Y TRASTEROS
PLANTA SÓTANO
SÓTANO 1 (TRASTEROS)
SÓTANO 2 (TRASTEROS)
SÓTANO 3 (TRASTEROS)
SÓTANO 4 (TRASTEROS)
SÓTANO 5 (TRASTEROS)
SÓTANO 6 (TRASTEROS)
SÓTANO 7 (TRASTEROS)
SÓTANO 8 (TRASTEROS)
SÓTANO 9 (TRASTEROS)
SÓTANO 10 (TRASTEROS)
SÓTANO 11 (TRASTEROS)
SÓTANO 12 (TRASTEROS)
SÓTANO 13 (TRASTEROS)
SÓTANO 14 (TRASTEROS)
SÓTANO 15 (TRASTEROS)
SÓTANO 16 (TRASTEROS)
SÓTANO 17 (TRASTEROS)
SÓTANO 18 (TRASTEROS)
SÓTANO 19 (TRASTEROS)
SÓTANO 20 (TRASTEROS)
SÓTANO 21 (TRASTEROS)
SÓTANO 22 (TRASTEROS)
SÓTANO 23 (TRASTEROS)
SÓTANO 24 (TRASTEROS)
SÓTANO 25 (TRASTEROS)
SÓTANO 26 (TRASTEROS)
SÓTANO 27 (TRASTEROS)
SÓTANO 28 (TRASTEROS)
SÓTANO 29 (TRASTEROS)
SÓTANO 30 (TRASTEROS)
SÓTANO 31 (TRASTEROS)
SÓTANO 32 (TRASTEROS)
SÓTANO 33 (TRASTEROS)
SÓTANO 34 (TRASTEROS)
SÓTANO 35 (TRASTEROS)
SÓTANO 36 (TRASTEROS)
SÓTANO 37 (TRASTEROS)
SÓTANO 38 (TRASTEROS)
SÓTANO 39 (TRASTEROS)
SÓTANO 40 (TRASTEROS)
SÓTANO 41 (TRASTEROS)
SÓTANO 42 (TRASTEROS)
SÓTANO 43 (TRASTEROS)
SÓTANO 44 (TRASTEROS)
SÓTANO 45 (TRASTEROS)
SÓTANO 46 (TRASTEROS)
SÓTANO 47 (TRASTEROS)
SÓTANO 48 (TRASTEROS)
SÓTANO 49 (TRASTEROS)
SÓTANO 50 (TRASTEROS)
SÓTANO 51 (TRASTEROS)
SÓTANO 52 (TRASTEROS)
SÓTANO 53 (TRASTEROS)
SÓTANO 54 (TRASTEROS)
SÓTANO 55 (TRASTEROS)
SÓTANO 56 (TRASTEROS)
SÓTANO 57 (TRASTEROS)
SÓTANO 58 (TRASTEROS)
SÓTANO 59 (TRASTEROS)
SÓTANO 60 (TRASTEROS)
SÓTANO 61 (TRASTEROS)
SÓTANO 62 (TRASTEROS)
SÓTANO 63 (TRASTEROS)
SÓTANO 64 (TRASTEROS)
SÓTANO 65 (TRASTEROS)
SÓTANO 66 (TRASTEROS)
SÓTANO 67 (TRASTEROS)
SÓTANO 68 (TRASTEROS)
SÓTANO 69 (TRASTEROS)
SÓTANO 70 (TRASTEROS)
SÓTANO 71 (TRASTEROS)
SÓTANO 72 (TRASTEROS)
SÓTANO 73 (TRASTEROS)
SÓTANO 74 (TRASTEROS)
SÓTANO 75 (TRASTEROS)
SÓTANO 76 (TRASTEROS)
SÓTANO 77 (TRASTEROS)
SÓTANO 78 (TRASTEROS)
SÓTANO 79 (TRASTEROS)
SÓTANO 80 (TRASTEROS)
SÓTANO 81 (TRASTEROS)
SÓTANO 82 (TRASTEROS)
SÓTANO 83 (TRASTEROS)
SÓTANO 84 (TRASTEROS)
SÓTANO 85 (TRASTEROS)
SÓTANO 86 (TRASTEROS)
SÓTANO 87 (TRASTEROS)
SÓTANO 88 (TRASTEROS)
SÓTANO 89 (TRASTEROS)
SÓTANO 90 (TRASTEROS)
SÓTANO 91 (TRASTEROS)
SÓTANO 92 (TRASTEROS)
SÓTANO 93 (TRASTEROS)
SÓTANO 94 (TRASTEROS)
SÓTANO 95 (TRASTEROS)
SÓTANO 96 (TRASTEROS)
SÓTANO 97 (TRASTEROS)
SÓTANO 98 (TRASTEROS)
SÓTANO 99 (TRASTEROS)
SÓTANO 100 (TRASTEROS)



All information is correct to the best of our knowledge. Errors and prior sale excepted. This prospectus is purely for information purposes. Only the notarized deed of sale is legally binding.

PORTA MALLORQUINA • THERESIENST.: 81, D-80333 MÜNCHEN
TEL. +34 971 698 242 • INFO@PORTAMALLORQUINA.COM