

Paseo Marítimo

Объект № 1215531




PORTA MALLORQUINA®
Your home. Our passion.

Penthouse with private pool and terrace in Jonquet

жилая площадь: 229 m²

спальни: 3

санузел: 3

балкон или ✓

терраса: -

вид на море:

бассейн: ✓

Энергетическая
сертификация: в процессе

цена: по запросу



Paseo Marítimo

Объект № 121553I



Описание объекта:

In El Jonquet, a hillside neighbourhood exuding the old-world charm of a former fishing village, a unique building project consisting of 57 living units distributed over 3 residential buildings is currently under construction.

These exclusive residences offer incomparable living comfort for those seeking a special living experience in Mallorca. Thanks to the excellent location the Palma harbour and the well-known bustling districts of the city are within easy walking distance.

This penthouse apartment extends over a generous constructed area of 229 sqm. Its living space includes 3 bedrooms and 3 bathrooms, one of which is en suite, and an openly-designed living/dining area creating a spacious and inviting ambience. The apartment also has parking space for 2 vehicles. Its absolute highlight is a terrace with pool and outside kitchen, offering ample space for alfresco dining and outdoor activities.

A choice of 2 exclusive, very high-quality furnishing and equipment packages are offered, providing an incomparable living experience. In addition, tailor-made upgrade packages allow the apartments to be customised to the requirements of the residents.

XO JONQUET: - The park residences offer exceptional comfort and luxury together with an impressive range of amenities. These include an exclusive spa and wellness area with indoor and outdoor pools, a fitness room, a private cinema, a car-wash facility, a golf simulator and a wine cellar rounding off this exceptional offer. In addition, an in-house service and a community boat are available to offer residents an incomparable living experience.

Paseo Marítimo

Объект № 121553I



Месторасположения и окрестности:

The Paseo Marítimo forms the borderline from the capital Palma towards the water and extends on about 6 kilometres from the military port of Porto Pi in the west, along the historic centre, the antique pier, the cathedral till the fisher harbour of Portixol in the east. Whilst some people take the bicycle or the roller blades, others are jogging or simply walk; all of them are enjoying meanwhile the fresh breeze on the waterfront. The promenade of Palma is one of the favoured meeting points for the people of the island and the life not only vibrates during the day. The attractive nightlife offers different kind of hip dancing clubs, fancy pubs, coffee shops and restaurants for each taste. Sunny residential apartment blocks, south orientated, with views to the marinas with its floating yachts, define the image of the Paseo Marítimo.

Paseo Marítimo
Объект № 1215531



All information is correct to the best of our knowledge. Errors and prior sale excepted. This prospectus is purely for information purposes. Only the notarized deed of sale is legally binding.

PORTA MALLORQUINA • THERESIENST.: 81, D-80333 MÜNCHEN
TEL. +34 971 698 242 • INFO@PORTAMALLORQUINA.COM

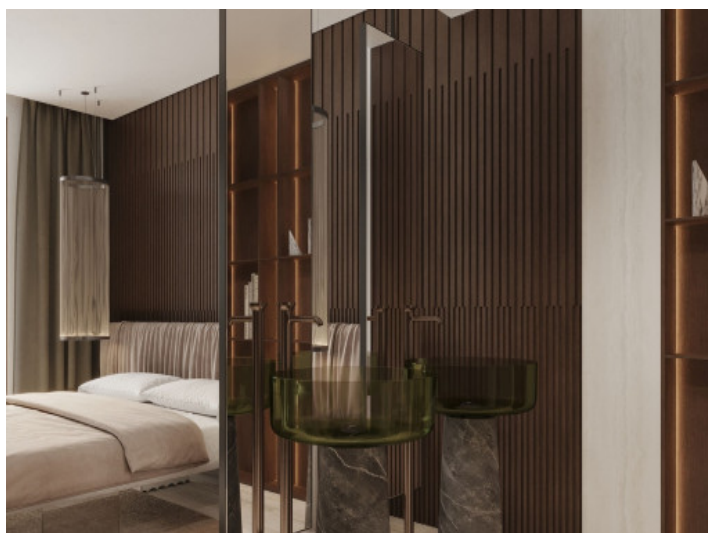
Paseo Marítimo
Объект № 1215531



All information is correct to the best of our knowledge. Errors and prior sale excepted. This prospectus is purely for information purposes. Only the notarized deed of sale is legally binding.

PORTA MALLORQUINA • THERESIENST.: 81, D-80333 MÜNCHEN
TEL. +34 971 698 242 • INFO@PORTAMALLORQUINA.COM

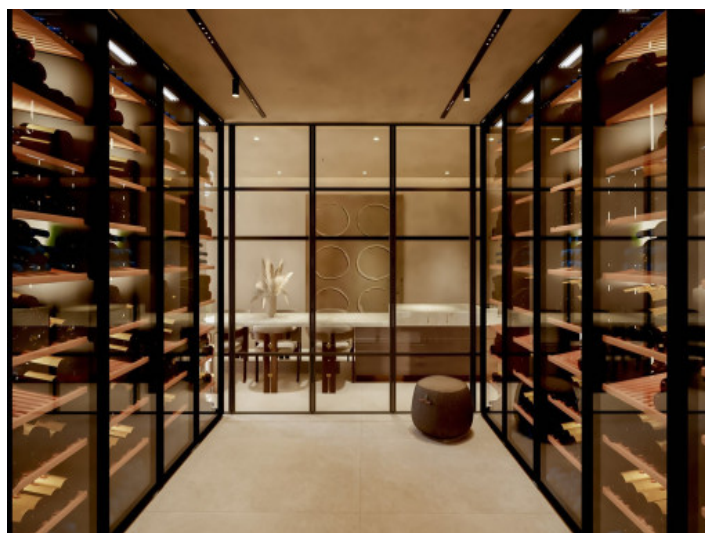
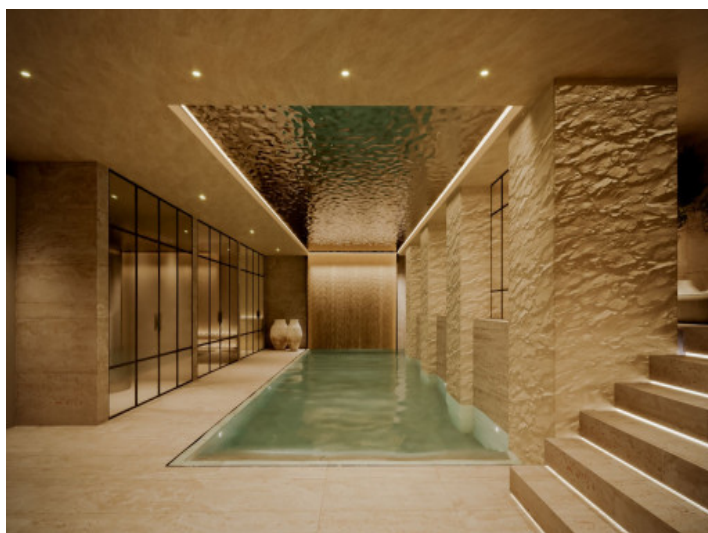
Paseo Marítimo
Объект № 1215531



All information is correct to the best of our knowledge. Errors and prior sale excepted. This prospectus is purely for information purposes. Only the notarized deed of sale is legally binding.

PORTA MALLORQUINA • THERESIENST.: 81, D-80333 MÜNCHEN
TEL. +34 971 698 242 • INFO@PORTAMALLORQUINA.COM

Paseo Marítimo
Объект № 1215531



All information is correct to the best of our knowledge. Errors and prior sale excepted. This prospectus is purely for information purposes. Only the notarized deed of sale is legally binding.

PORTA MALLORQUINA • THERESIENST.: 81, D-80333 MÜNCHEN
TEL. +34 971 698 242 • INFO@PORTAMALLORQUINA.COM

A modern interior design featuring a large, dark wood shelving unit with a curved metal frame, a white sofa, and a large window with a view of a city. The room is furnished with a white sofa, a coffee table, and a large window with a view of a city. The design is minimalist and contemporary, with a focus on clean lines and natural materials.

