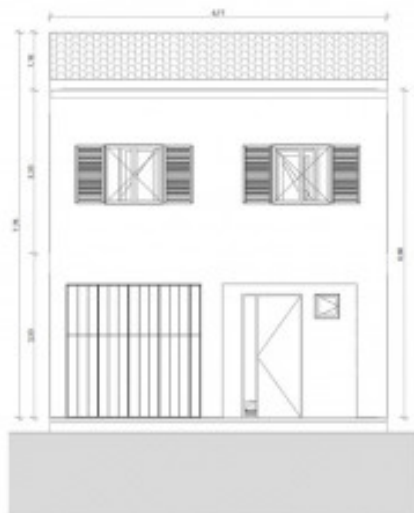


Ллусмајор

Объект № 119993А



ALBADOVI



PORTA MALLORQUINA®

Your home. Our passion.

Newly-built construction project: townhouse in Llucmajor

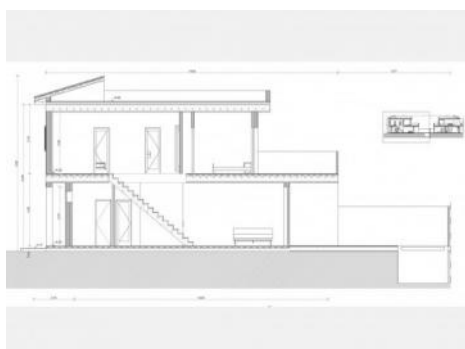
жилая площадь: 163 m²
спальни: 2
санузел: 2
вид на море: -

Энергетическая
сертификация:

в процессе

цена:

€ 500.000,-



Ллустајор

Объект № 119993А



Описание объекта:

This modern town-house is currently under construction with completion foreseen for the end of 2024.

The high-quality house has a living space of 163 sqm including, on the ground floor, 2 bedrooms, 2 bathrooms, a garage and a small courtyard.

The first floor houses the kitchen with open living/dining area, a separate guest WC, and 2 large terraces, one on each side.

Further features include underfloor heating with air/heat pump and air conditioning.

It would also be possible to purchase a second house which has a pool (REF: MAL-119993), thereby considerably increasing both the living area and investment potential.

- (REF: MAL-119993B): 650.000 €

- (REF: MAL-119993): 1.100.000 €

Ллусмајор

Объект № 119993А



Месторасположения и окрестности:

In terms of surface area, Lluçmajor is the largest municipal county on the island of Majorca and is located in the south. Its population amounts to 20,000 inhabitants.

The small city includes 4 supermarkets, some well loved cafés and tapa-bars, and even a thrice-weekly fruit and vegetable market, taking place in the very recently renovated town centre, with its Plaza de España and the second largest church on the island.

The picturesque hill-location of Randa on the mountain of the same name, which is the most elevated point in the island's centre, houses three sanctuaries, and is located slightly north of the town. Lluçmajor has developed into an economic and popular residential location, due to the new motor-way connection to Palma. The Marriott Son Antem Golf Resort and Spa, and nearby yacht clubs make Lluçmajor an interesting and central location for planning pass-times and excursions.

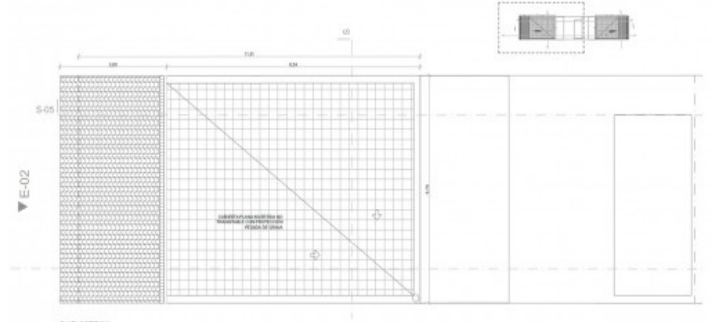
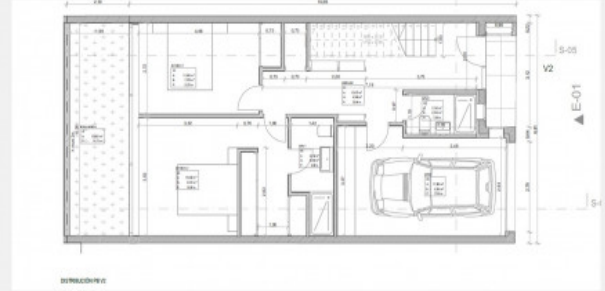
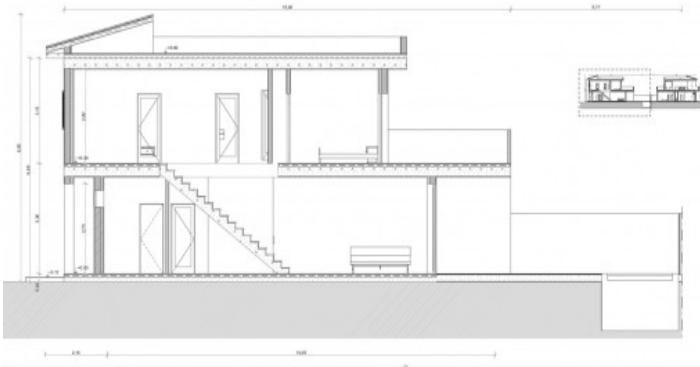
The Es Trenc natural beach, one of the nicest on the island and with a Caribbean similarity, lies just 15 car minutes from Lluçmajor.

Цустажор

Объект № 119993А



PORTA MALLORQUINA®
Your home. Our passion.



All information is correct to the best of our knowledge. Errors and prior sale excepted. This prospectus is purely for information purposes. Only the notarized deed of sale is legally binding.